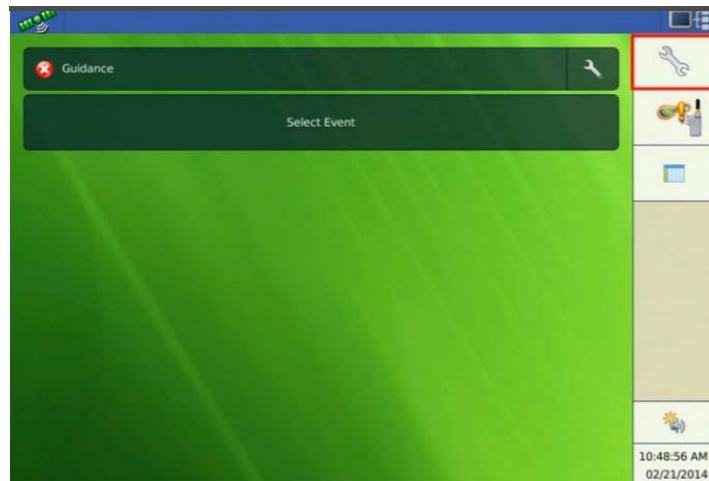


Harvest Configuration Setup

AgLeader Versa Terminal

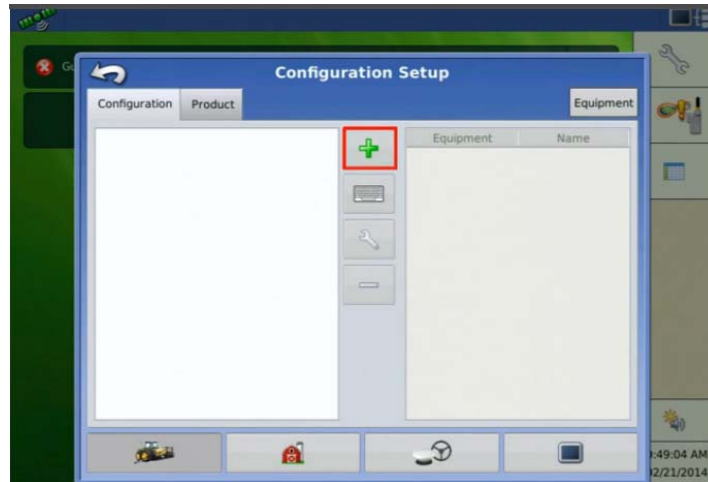
Harvest Configuration Setup




- In order to add a new harvest configuration, select the configuration wrench icon from the home screen.

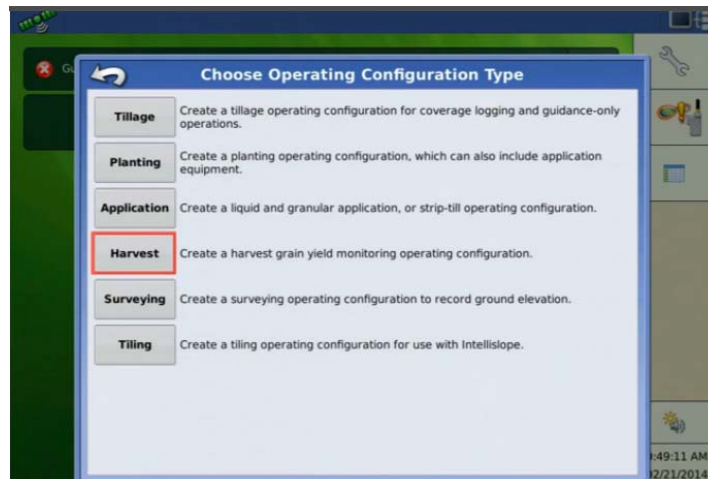


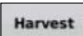
Harvest Configuration Setup



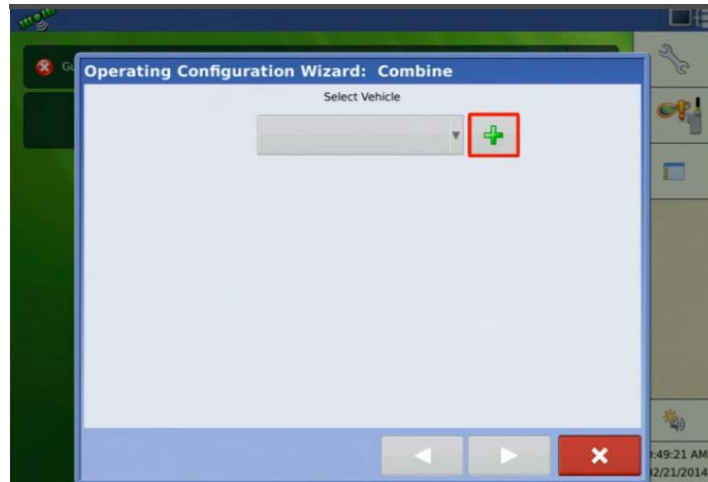
- Select the green plus icon to add a new harvest configuration. 

Harvest Configuration Setup



- Select Harvest. 

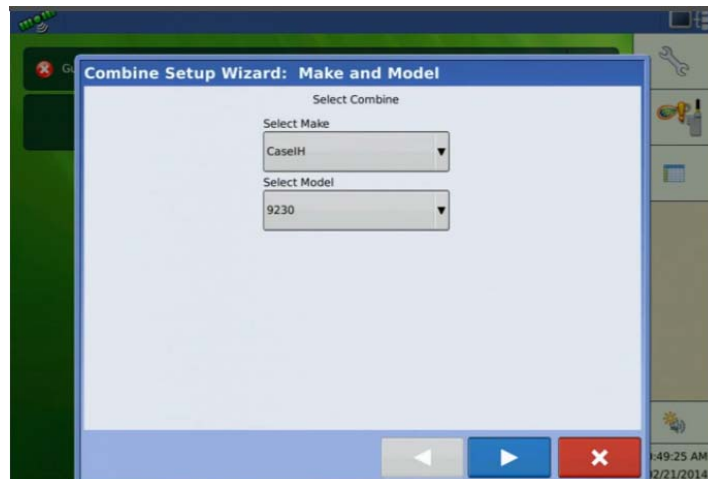
Harvest Configuration Setup



- ❑ Since we do not have a configuration created, select the green plus icon to add a new harvest configuration.

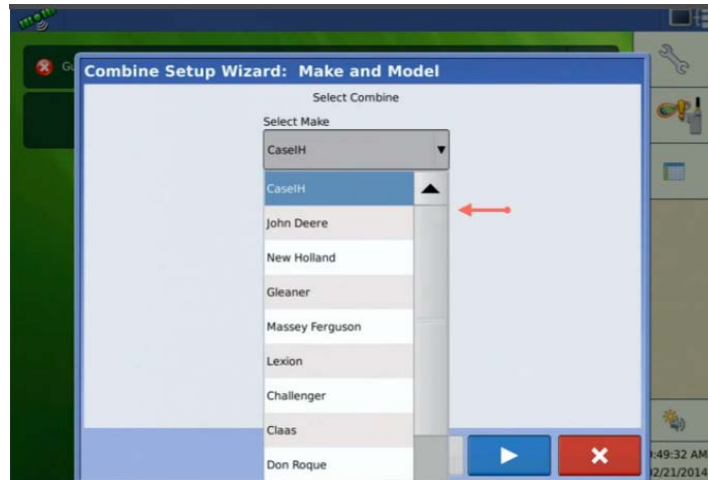


Harvest Configuration Setup



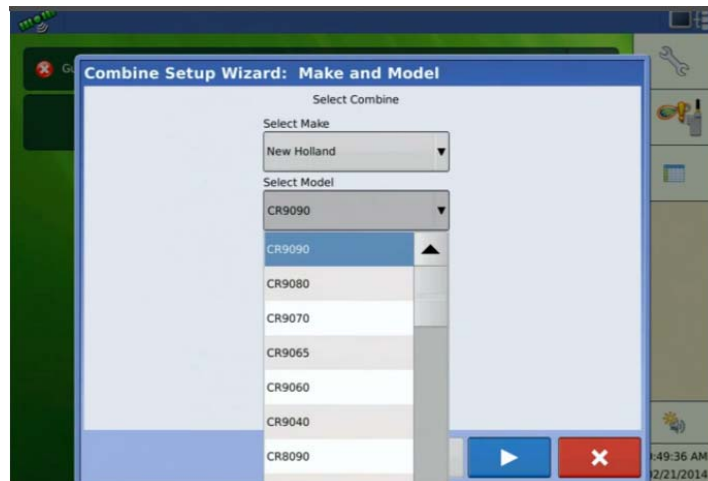
- ❑ Input the make and model of your machine.

Harvest Configuration Setup



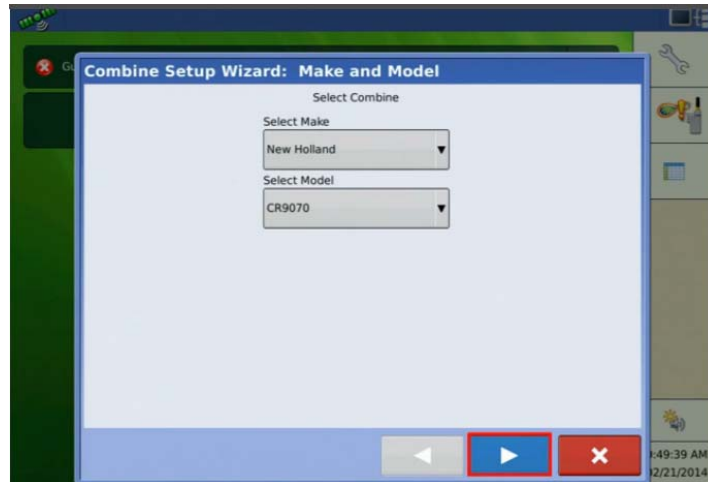
- ❑ Press the drop down menu and select the correct make of machine. For this example we will reference a New Holland CR9070.


Harvest Configuration Setup



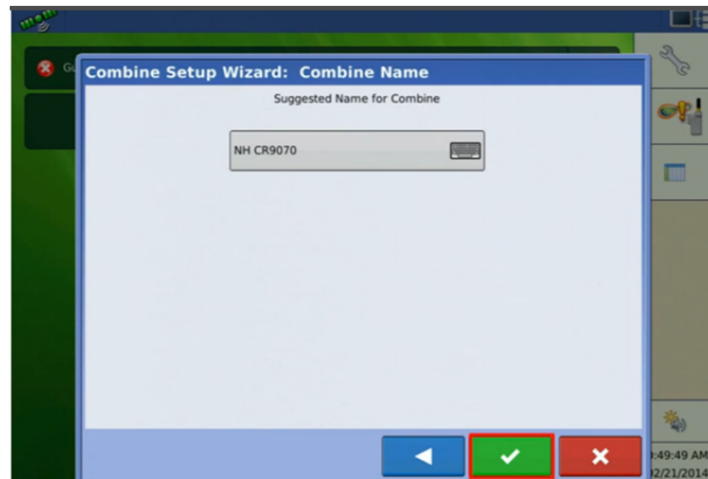
- ❑ Press the drop down menu for the model and choose CR9070 for this example.



Harvest Configuration Setup



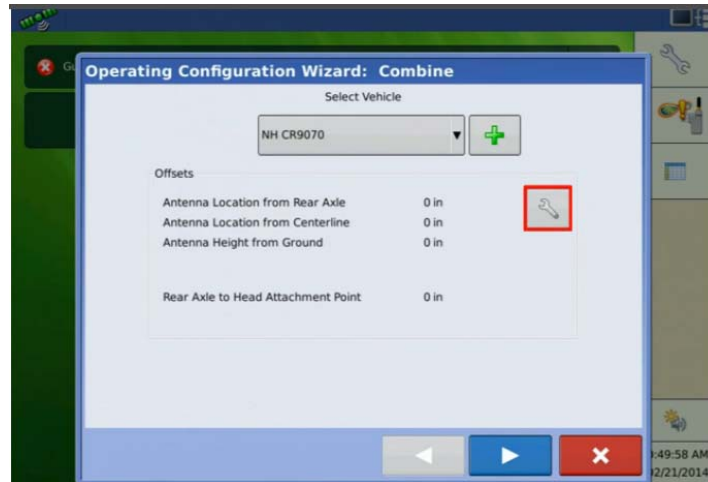
- Press the blue "next" arrow to proceed. 

Harvest Configuration Setup



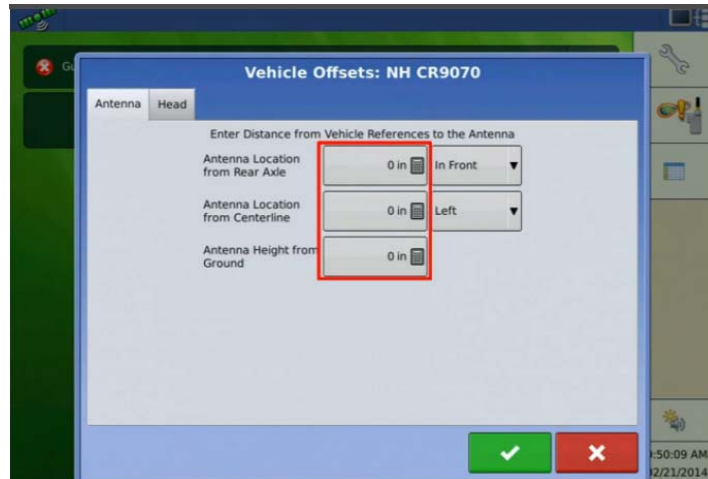
- The next step is to name the combine configuration. The system automatically defaults to an abbreviated make and model of the machine you selected. To change, simply select the keyboard icon.  Select the green check to continue. 

Harvest Configuration Setup



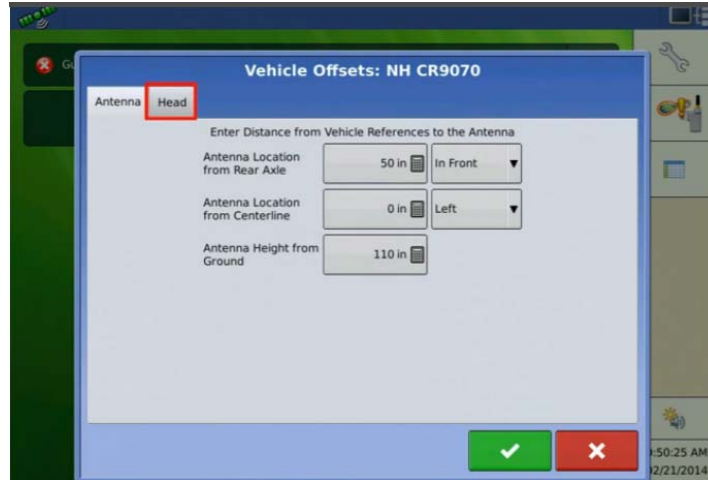
- ❑ Press the wrench icon to input the offset values for the GPS antenna and header.

Harvest Configuration Setup



- ❑ Press the calculator icon to input the recommended offset parameters in inches.

Harvest Configuration Setup



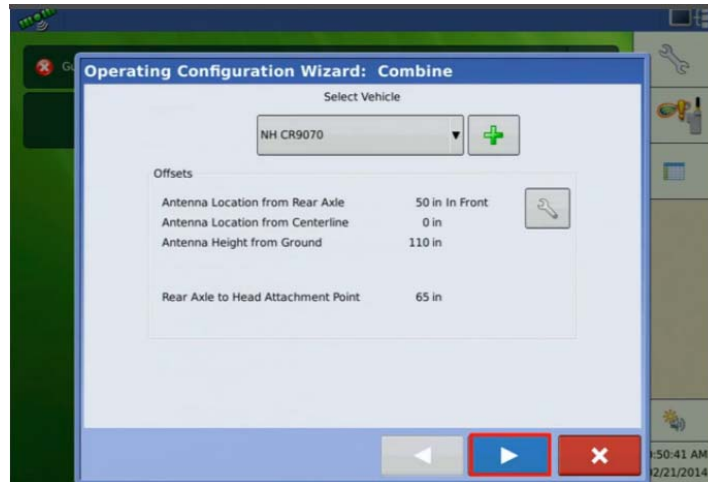
- Navigate to the head tab to input the head offset values.

Harvest Configuration Setup



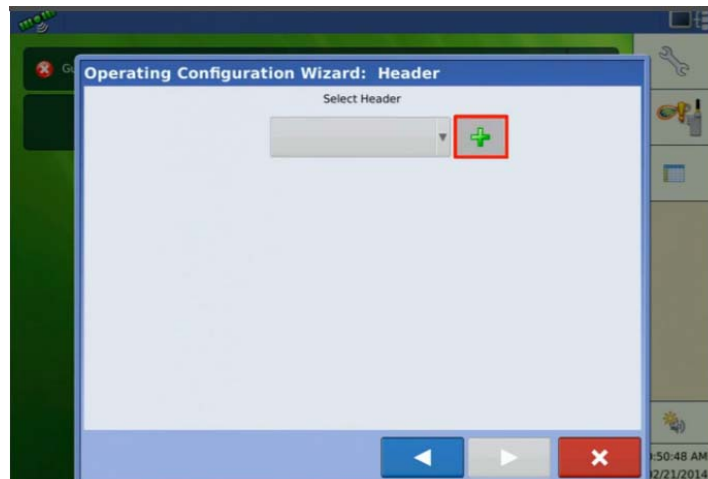
- Input the recommended head offset value by selecting the calculator icon.
Select the green check to continue.

Harvest Configuration Setup



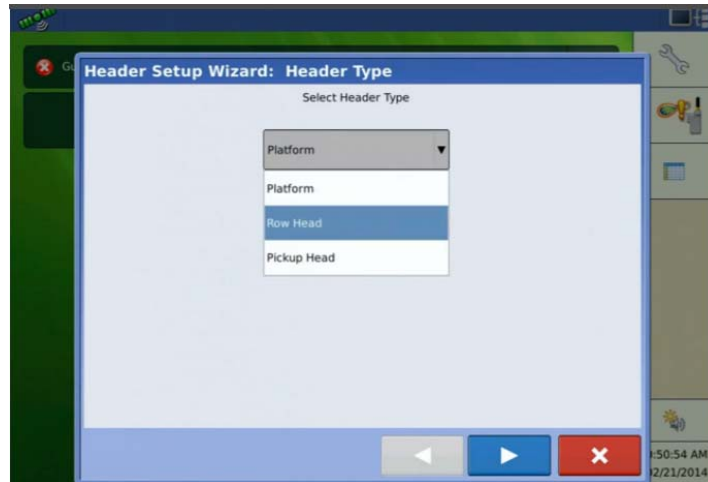
Press the "next" arrow.

Harvest Configuration Setup



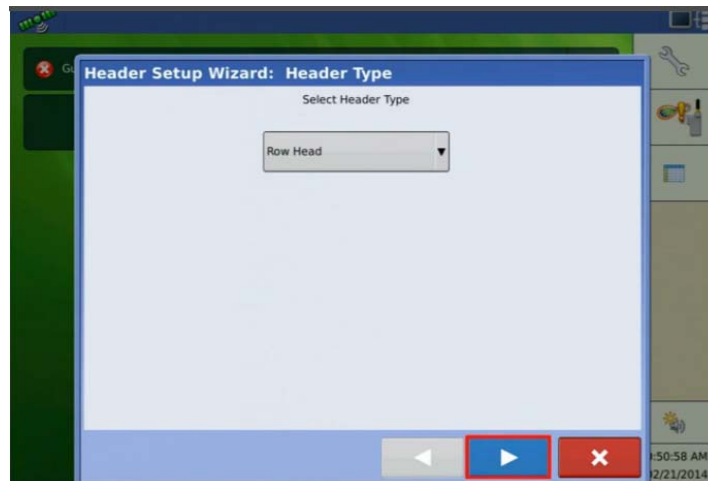
Press the green plus icon to add a header.


Harvest Configuration Setup



- ❑ For this example our machine will be equipped with a corn head. Press the drop down menu and choose row head.


Harvest Configuration Setup



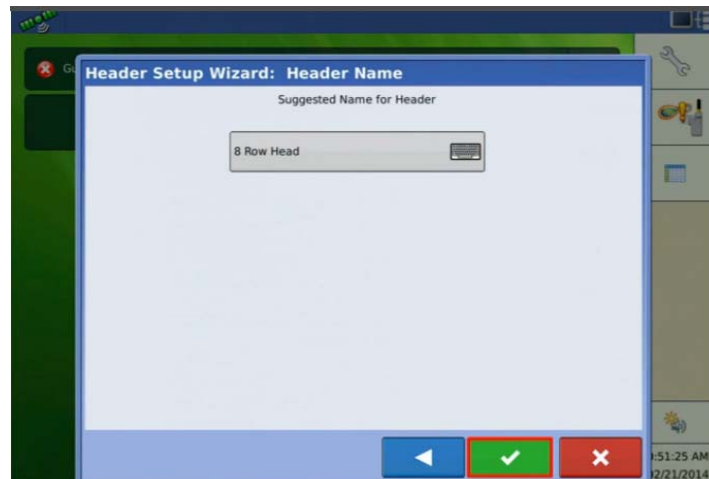
- ❑ Press the "next" arrow. 



Harvest Configuration Setup



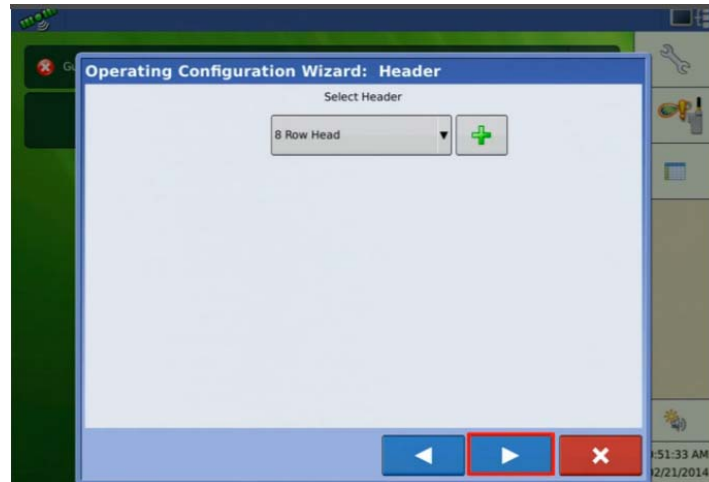
- Input the correct number of rows and row spacing then press the blue "next" arrow. 


Harvest Configuration Setup



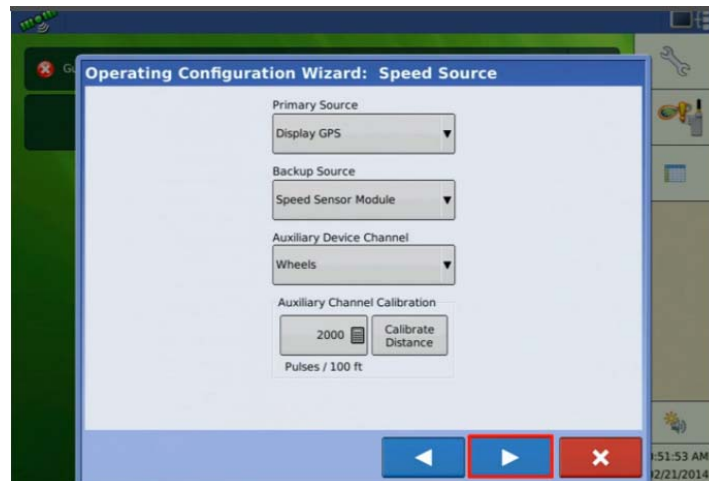
- The system provides a default name for row heads with the number of rows. In order to change the name, select the key board icon.  Press the green check to proceed. 


Harvest Configuration Setup



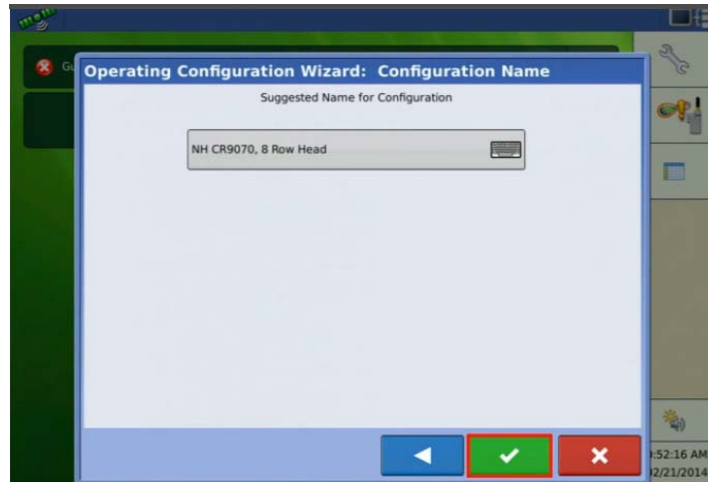
- Press the "next" arrow. 


Harvest Configuration Setup



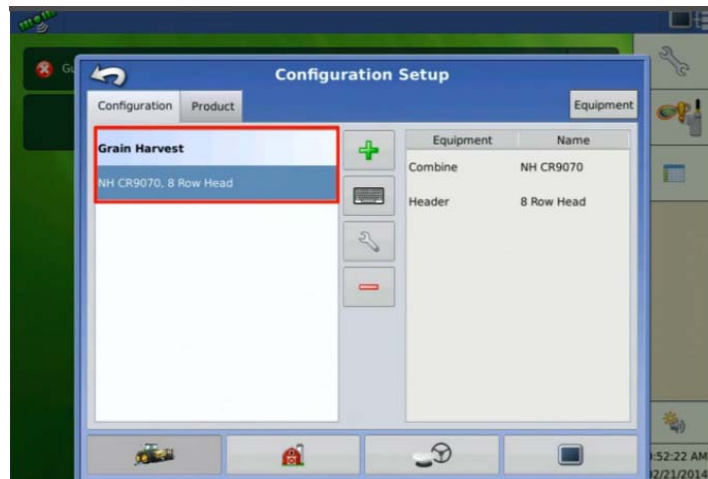
- The primary speed source should always show "Display GPS" if you have a GPS receiver connected, the backup speed source will be set to "Speed Sensor Module", and the auxiliary device channel should show "Wheels". The auxiliary channel calibration will be accessible once the configuration is complete. Press the blue "next" icon to proceed. 

Harvest Configuration Setup



- ❑ Finally, enter the name for the overall configuration. The system defaults to the combine make and model and the header type and size. Once satisfied with the name, press the green check to continue. 

Harvest Configuration Setup



- ❑ You will now see your combine header configuration added to the list under grain harvest.